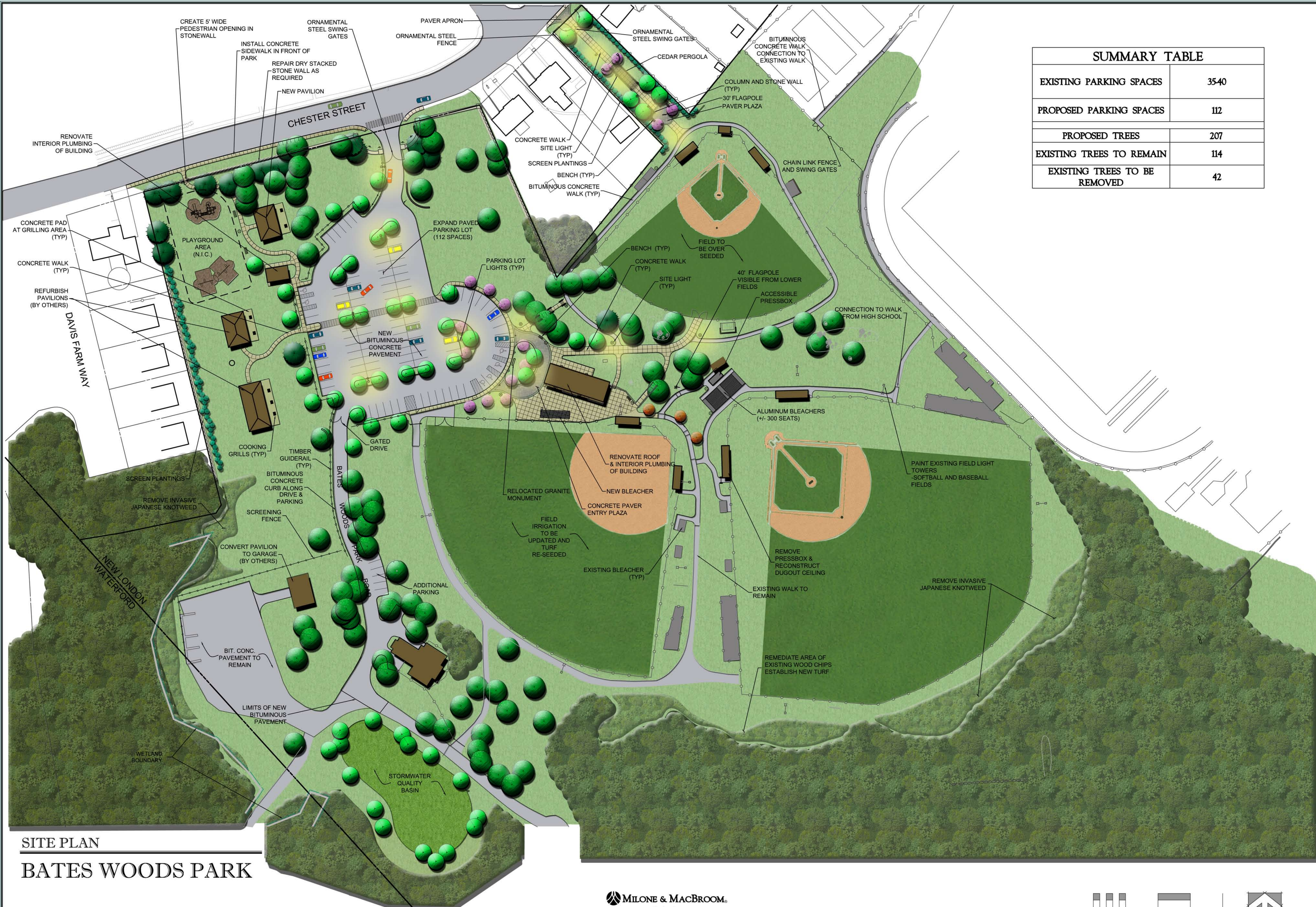


SUMMARY TABLE	
EXISTING PARKING SPACES	3540
PROPOSED PARKING SPACES	112
PROPOSED TREES	207
EXISTING TREES TO REMAIN	114
EXISTING TREES TO BE REMOVED	42



**SITE PLAN**  
**BATES WOODS PARK**

CHESTER STREET  
NEW LONDON, CONNECTICUT  
MARCH 15, 2010

**MILONE & MACBROOM**  
Engineering,  
Landscape Architecture  
and Environmental Science  
99 Realty Drive  
Cheshire, Connecticut 06410  
(203) 271-1773 Fax (203) 272-9733  
www.miloneandmacbroom.com

